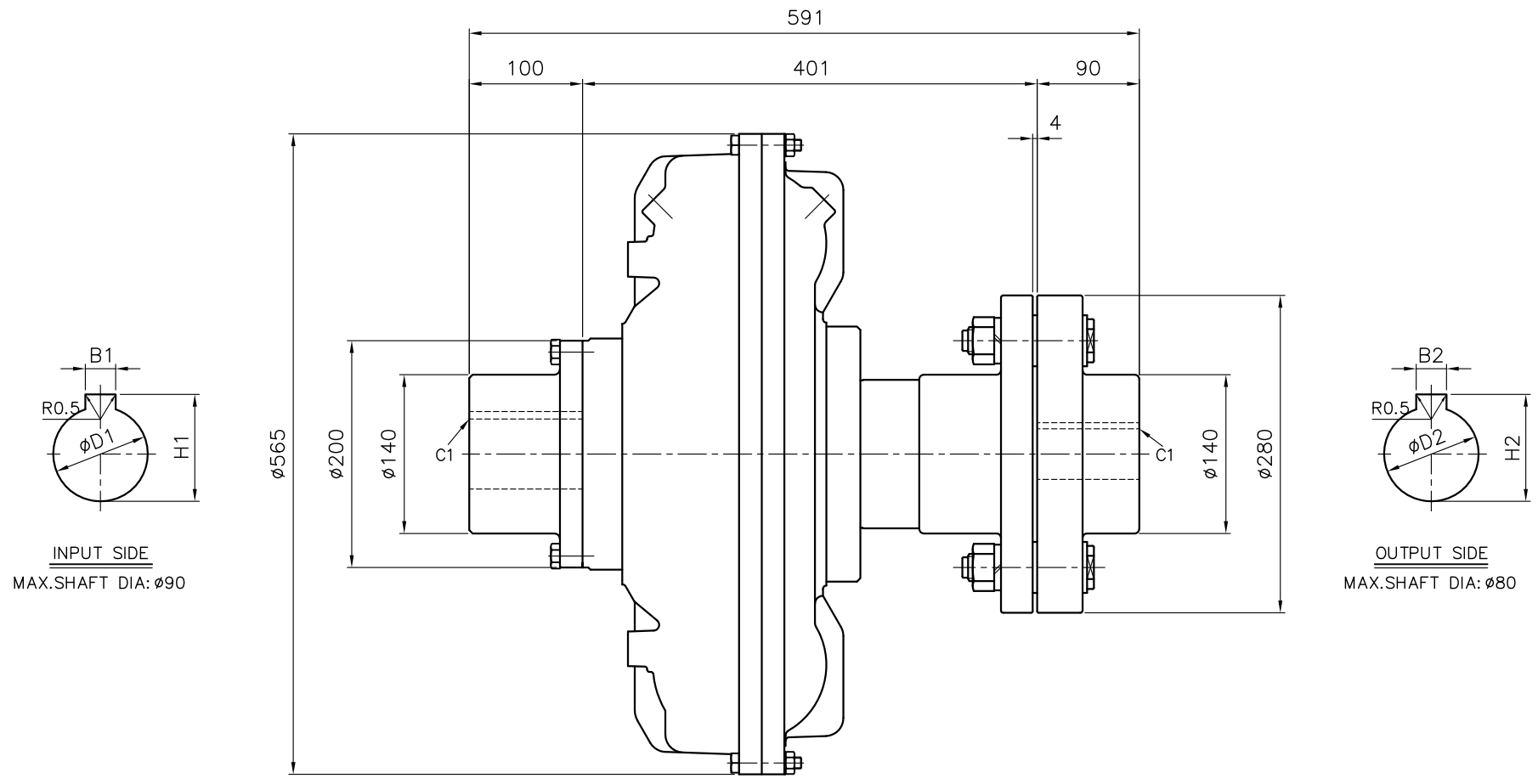


*** 경고 *** 이 도면은 나리코퍼레이션의 자산이므로 당사의 승인 없이 이 도면을 제3자에게 양도, 복사, 판매하거나 이 도면에 의해 제작 및 판매하는 것은 불법입니다.

MARK	DATE	REVISION	REASON	SIGNATURE

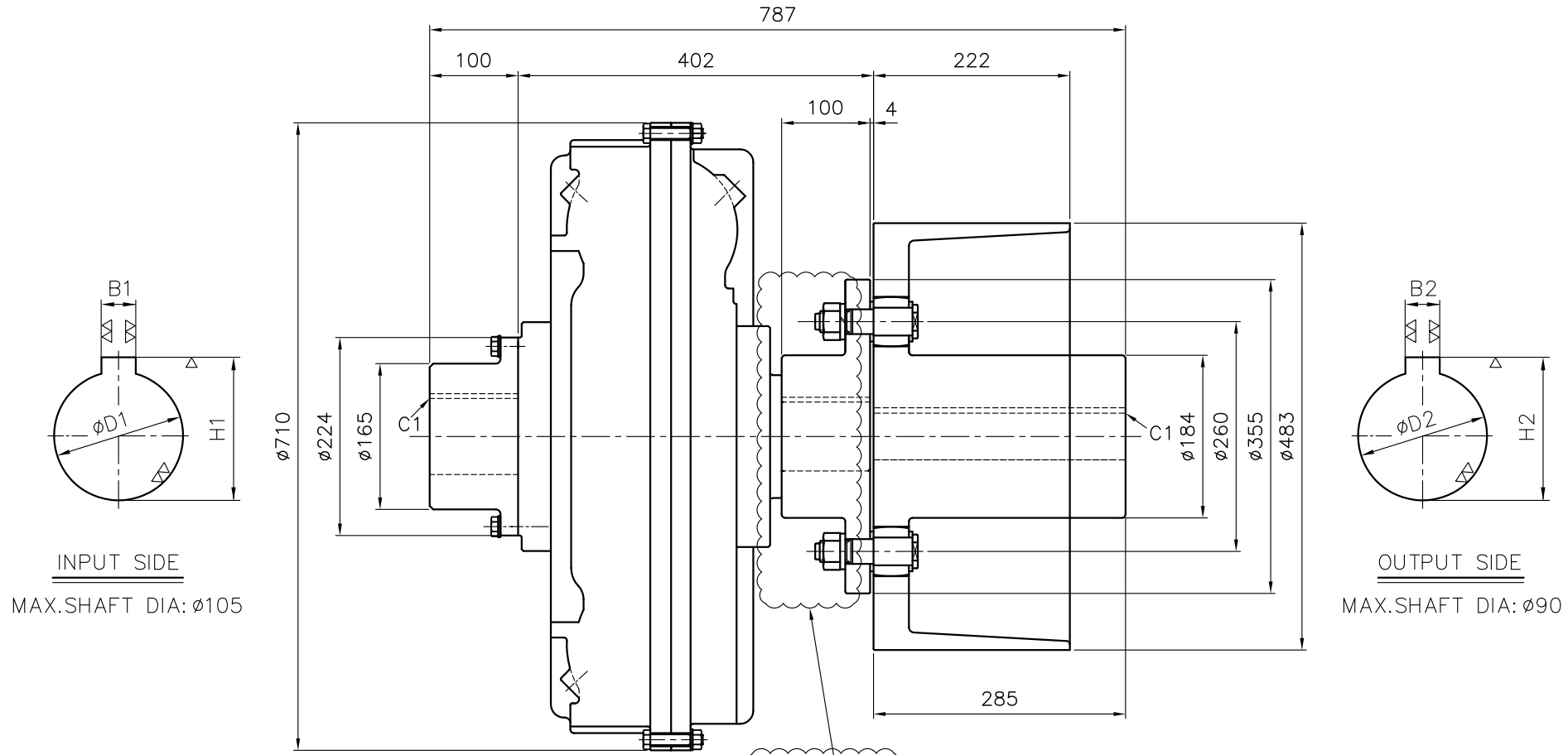


CONV NO.	MOTOR POWER (kW)	SPEED (rpm)	INPUT SIDE			OUTPUT SIDE			Q, TY (Sets)
			D1	B1	H1	D2	B2	H2	
3B/C	75	1,185	$\begin{matrix} +0.035 \\ 0 \end{matrix}$ ø85H7	±0.026 22Js9	$\begin{matrix} +0.2 \\ 0 \end{matrix}$ 90.4	$\begin{matrix} +0.030 \\ 0 \end{matrix}$ ø70H7	±0.026 20Js9	$\begin{matrix} +0.2 \\ 0 \end{matrix}$ 74.9	1

GENERAL TOLERANCE (mm)		SURFACE ROUGHNESS		FINISH MARK		COUPLING		19K		NO.		DESCRIPTIONS		SIZE		MAT'L		Q'TY /SET		WEIGHT (kgf)		REMARKS	
0.5~3	±0.1	0.5	1.0	100S	~	CUSTOMER		(주)서울산업		SCALE		1/4		PROJECTION		DRAWN		CHECKED		APPROVED		REV. NO.	
3~6	±0.1	1.2	2.5	50S	~	TITLE		19 KRDF-S		DWG.NO.		KRDF1900S		REF.NO.		SI-HD-SRBH-001		S.M. LEE		S.M. LEE		S.Y. KIM	
6~30	±0.2	1.2	2.5	25S	~	DRAWN		21.08.27		CHECKED		21.08.27		APPROVED		21.08.27		S.M. LEE		S.M. LEE		S.Y. KIM	
30~120	±0.3	1.2	2.5	12.5S	~	NARA CORPORATION		21.08.27		21.08.27		21.08.27		21.08.27		21.08.27		21.08.27		21.08.27		21.08.27	
120~400	±0.5	1.2	2.5	6.3S	~	21.08.27		21.08.27		21.08.27		21.08.27		21.08.27		21.08.27		21.08.27		21.08.27		21.08.27	
400~1000	±0.8	1.2	2.5	3.2S	~	21.08.27		21.08.27		21.08.27		21.08.27		21.08.27		21.08.27		21.08.27		21.08.27		21.08.27	
1000~2000	±1.2	1.2	2.5	0.8S	~	21.08.27		21.08.27		21.08.27		21.08.27		21.08.27		21.08.27		21.08.27		21.08.27		21.08.27	
2000~4000	±2	1.2	2.5	0.4S	~	21.08.27		21.08.27		21.08.27		21.08.27		21.08.27		21.08.27		21.08.27		21.08.27		21.08.27	

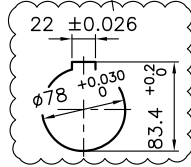
*** WARNING *** This drawing is an asset of Nara Corporation, so it is illegal to transfer, copy and sell the drawing to a third party or manufacture and sell by using it without our company approval.

MARK	DATE	REVISION	REASON	SIGNATURE



INPUT SIDE
MAX.SHAFT DIA: $\phi 105$

OUTPUT SIDE
MAX.SHAFT DIA: $\phi 90$



CONV NO.	MOTOR POWER (kW)	SPEED (rpm)	INPUT SIDE			OUTPUT SIDE			Q,TY (Sets)
			D1	B1	H1	D2	B2	H2	
5B/C	110	1,200	$\begin{matrix} +0.035 \\ 0 \end{matrix}$	± 0.026	$\begin{matrix} +0.2 \\ 0 \end{matrix}$				1
			$\phi 85H7$	22Js9	90.4				

GENERAL TOLERANCE (mm)		SURFACE ROUGHNESS		COUPLING		24K					
0.5~3	± 0.1	Ra	Rmax	NO.	DESCRIPTIONS	SIZE	MAT'L	Q'TY /SET	WEIGHT (kgf)	REMARKS	
3~6	± 0.1	$\sqrt{12.5}$	100S	CUSTOMER				SCALE	1/5	PROJECTION	
6~30	± 0.2	$\sqrt{25}$	50S	TITLE	24 KRDFB-S FLUID COUPLING			DWG.NO.	KRDFB2400-S	REV. NO.	0
30~120	± 0.3	$\sqrt{50}$	25S	DRAWN	CHECKED	APPROVED					
120~400	± 0.5	$\sqrt{12.5}$	12.5S	S.M. LEE	S.M. LEE	S.Y. KIM					
400~1000	± 0.8	$\sqrt{6.3}$	6.3S	21.08.27	21.08.27	21.08.27					
1000~2000	± 1.2	$\sqrt{3.2}$	3.2S								
2000~4000	± 2	$\sqrt{1.6}$	1.6S								

NARA CORPORATION

*** 경고 *** 이 도면은 나리코퍼레이션의 자산이므로 당사의 승인 없이 이 도면을 제3자에게 양도, 복사, 판매하거나 이 도면에 의해 제작 및 판매하는 것은 불법입니다.